

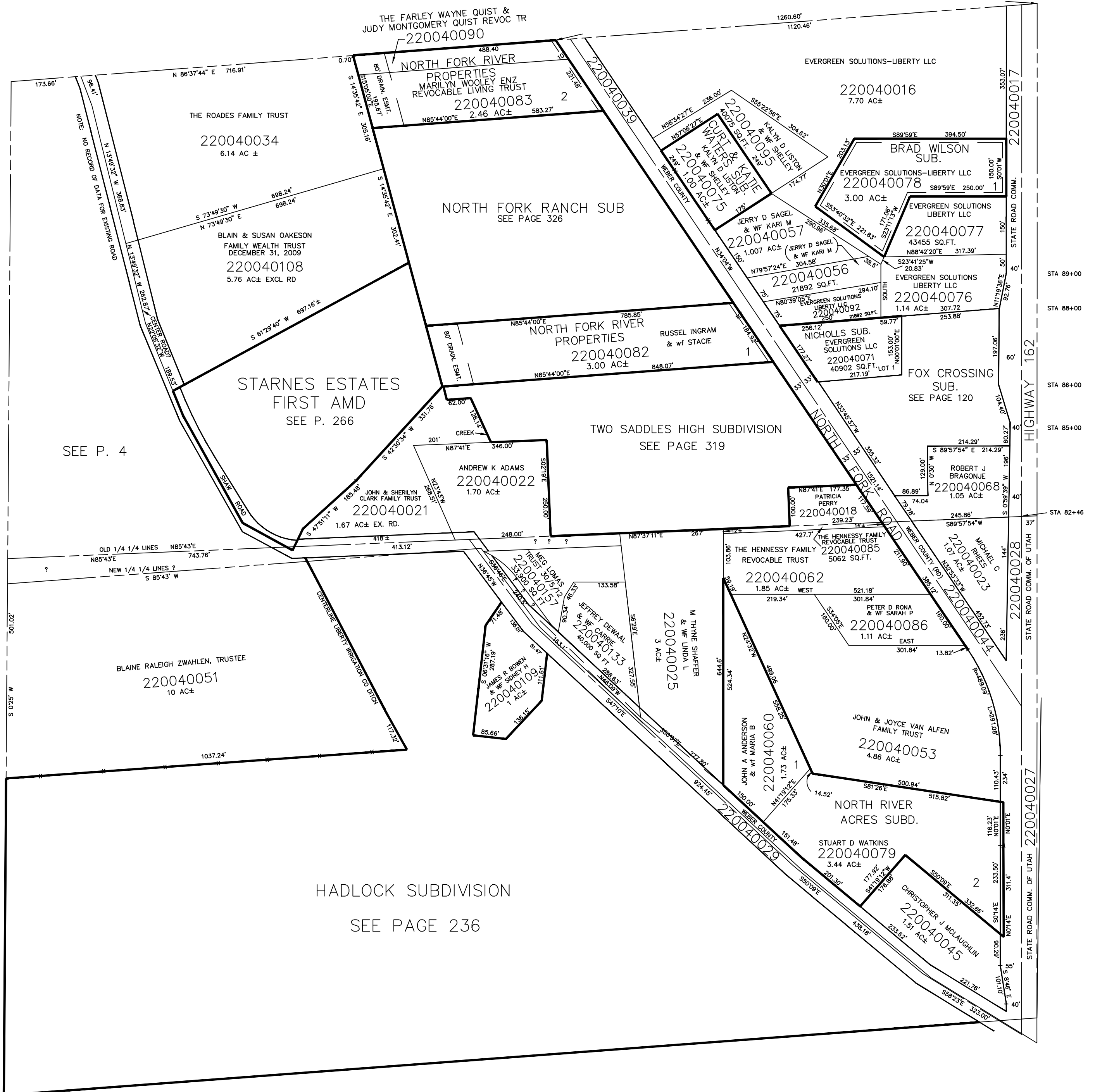
S.E. 1/4  
SECTION 7, T.7N., R.1E., S.L.B. & M.

TAXING UNIT: 36

IN WEBER COUNTY

SCALE 1" = 200'

SEE PAGE 4-1



SEE PAGE 4

SEE PAGE 5

HADLOCK SUBDIVISION  
SEE PAGE 236

SEE PAGE 8